

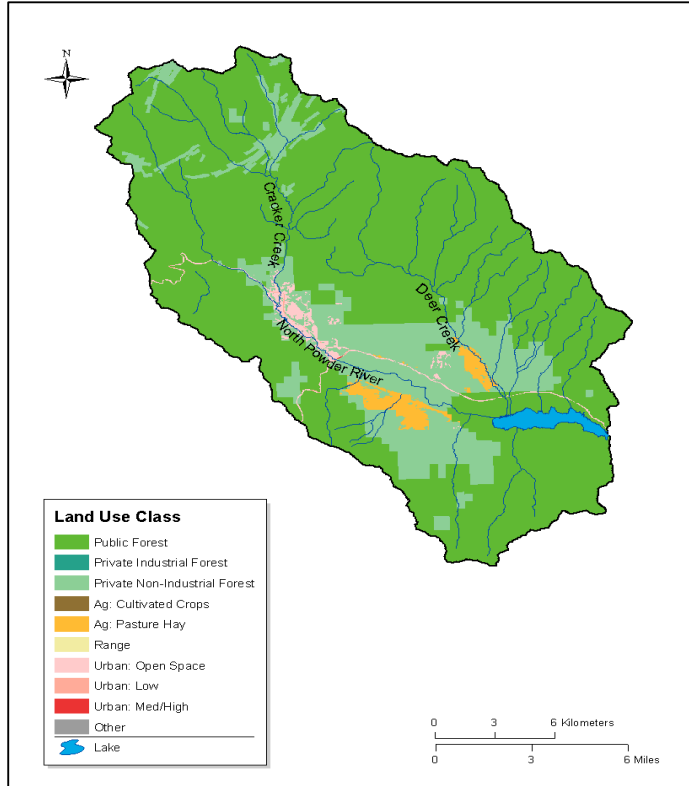
Phillips Reservoir

Baker County – Powder River Basin

Lake Origin: Man Made

Elevation: 4072 ft (1234 meters)

Location: N 42.06732, W -119.56076



WATERSHED CHARACTERISTICS

Area	Population Density	Annual Precipitation	Dominant Geology
42,693 HA	1 peop/mi	75 cm	Argillite and Slate

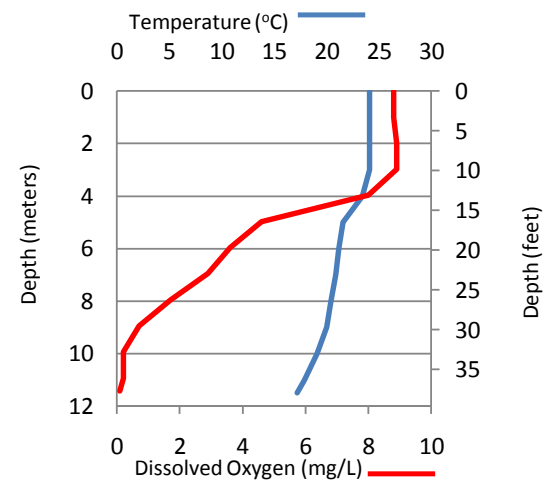
LAND USE

Forest	Agriculture	Range	Urban	Other
97 %	2%	0%	1%	0%

LAKE CHARACTERISTICS

Lake Area	Maximum Depth	Manager
434 HA	11.6 meters	State/Federal

Temperature and Oxygen Profiles



WATER QUALITY PARAMETERS

Sample Date	7/30/2007	Turbidity (NTU)	4
pH	9.3	Chlorophyll-a (µg/L)	15.89
Conductivity (µmhos/cm)	106	Secchi (meters)	1.19
ANC (µeq/L)	878	Total Phosphorus (mg/L)	0.042
Calcium Ion (mg/L)	11.19	Total Nitrogen (mg/L)	0.531

LAKE CONDITION

Biological Indicators			
Plankton (O/E)			
<i>Fair</i>			
Physical Habitat			
Shoreline Human Disturbance	Riparian Veg Cover	Littoral Cover	Littoral and Riparian Cover
<i>Fair</i>	<i>Poor</i>	<i>Poor</i>	<i>Poor</i>
Water Quality Indicators			
Total Phosphorus	Total Nitrogen	Turbidity	Chlorophyll-a
<i>Poor</i>	<i>Poor</i>	<i>Fair</i>	<i>Poor</i>

TROPHIC STATUS

Secchi	Chlorophyll-a
<i>Eutrophic</i>	<i>Eutrophic</i>
Total Phosphorus	Total Nitrogen
<i>Eutrophic</i>	<i>Mesotrophic</i>

